

\$449,900 - 64 Greenwood Way, Sherwood Park

MLS® #E4460796

\$449,900

4 Bedroom, 2.50 Bathroom, 1,192 sqft

Single Family on 0.00 Acres

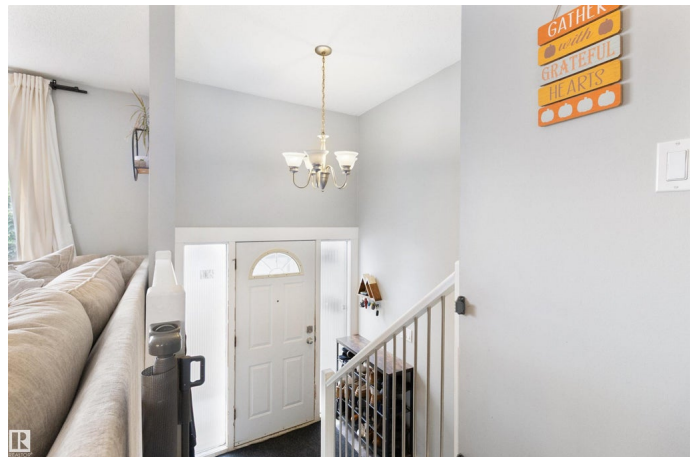
Maplewood (Sherwood Park), Sherwood Park, AB

Welcome to this updated bi-level with a double ATTACHED garage in the beautiful mature neighbourhood in Maplegrove! Main floor features a cozy living room, a partially open kitchen and a dining room with access to the deck. There is a primary bedroom with a 2 piece ensuite as well as two additional bedrooms to complete the main floor. Basement features a second kitchen, massive flex room, a 4 piece bath and a large rec room. Basement has a separate entrance and the potential to converting into a suite. Upgraded vinyl plank throughout. Enjoy the large south facing backyard, perfect for a garden, for kids to play and barbecue's. Walking distance to Roasti & Everyday food co. This home has so many potentials whether this if your first home, you are starting a family, or looking for an investment you don't want to miss this one!

Built in 1970

Essential Information

MLS® #	E4460796
Price	\$449,900
Bedrooms	4
Bathrooms	2.50
Full Baths	2
Half Baths	1



Square Footage	1,192
Acres	0.00
Year Built	1970
Type	Single Family
Sub-Type	Detached Single Family
Style	Bi-Level
Status	Active

Community Information

Address	64 Greenwood Way
Area	Sherwood Park
Subdivision	Maplewood (Sherwood Park)
City	Sherwood Park
County	ALBERTA
Province	AB
Postal Code	T8A 0J5

Amenities

Amenities	See Remarks
Parking	Double Garage Attached, Heated

Interior

Interior Features	ensuite bathroom
Appliances	Dishwasher-Built-In, Dryer, Oven-Microwave, Refrigerators-Two, Stoves-Two
Heating	Forced Air-1, Natural Gas
Stories	2
Has Basement	Yes
Basement	Full, Finished

Exterior

Exterior	Wood, Stucco, Vinyl
Exterior Features	Playground Nearby, Public Transportation, Schools, Shopping Nearby, See Remarks
Roof	Asphalt Shingles
Construction	Wood, Stucco, Vinyl
Foundation	Concrete Perimeter

Additional Information

Date Listed October 3rd, 2025

Days on Market 1

Zoning Zone 25

DATA IS DEEMED RELIABLE BUT IS NOT GUARANTEED ACCURATE BY THE REALTORS® ASSOCIATION OF EDMONTON. COPYRIGHT 2025 BY THE REALTORS® ASSOCIATION OF EDMONTON. ALL RIGHTS RESERVED. Trademarks are owned or controlled by the Canadian Real Estate Association (CREA) and identify real estate professionals who are members of CREA (REALTOR®, REALTORS®) and/or the quality of services they provide (MLS®, Multiple Listing Service®)

Listing information last updated on October 4th, 2025 at 3:02pm MDT