

## \$674,900 - 16311 34 Avenue, Edmonton

MLS® #E4460735

**\$674,900**

3 Bedroom, 2.50 Bathroom, 2,216 sqft

Single Family on 0.00 Acres

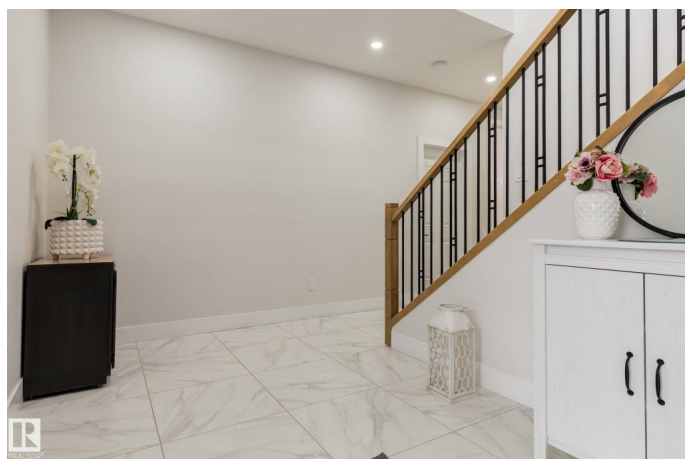
Glenridding Ravine, Edmonton, AB

Welcome to this 2,200 sq ft 2-storey home in the new community of Ridgecrest! Meticulously maintained and showing like new, this home boasts an open-to-above foyer, main floor den, bright white kitchen with a walk-in pantry, and a living room with a striking stone feature wall and electric fireplace. Off the dining area, step out to a spacious deck overlooking your fully fenced, landscaped, south-facing backyard. Upstairs youâ€™ll find laundry, 3 bedroomsâ€”including a generous primary suite with 5-piece ensuite and walk-in closet. Two additional bedrooms are well-sized with closets featuring MDF organizers. The basement is unfinished, ready for your personal touch. The oversized double attached garage includes a tandem bayâ€”ideal for a workshop, sports gear, or extra storage. Ridgecrest offers ravine walking trails, nearby shopping, and public transportation just minutes away!

Built in 2021

### Essential Information

MLS® #	E4460735
Price	\$674,900
Bedrooms	3
Bathrooms	2.50
Full Baths	2



Half Baths	1
Square Footage	2,216
Acres	0.00
Year Built	2021
Type	Single Family
Sub-Type	Detached Single Family
Style	2 Storey
Status	Active

### Community Information

Address	16311 34 Avenue
Area	Edmonton
Subdivision	Glenridding Ravine
City	Edmonton
County	ALBERTA
Province	AB
Postal Code	T6W 4V7

### Amenities

Amenities	Ceiling 9 ft., Deck, Detectors Smoke, Hot Water Natural Gas, No Animal Home, No Smoking Home, HRV System
Parking	Double Garage Attached, Tandem

### Interior

Interior Features	ensuite bathroom
Appliances	Dishwasher-Built-In, Dryer, Hood Fan, Oven-Built-In, Oven-Microwave, Refrigerator, Stove-Countertop Electric, Washer
Heating	Forced Air-1, Natural Gas
Fireplace	Yes
Fireplaces	Insert
Stories	2
Has Basement	Yes
Basement	Full, Unfinished

### Exterior

Exterior	Wood, Stone, Vinyl
Exterior Features	Fenced, Landscaped, Playground Nearby, Shopping Nearby
Roof	Asphalt Shingles
Construction	Wood, Stone, Vinyl

Foundation                      Concrete Perimeter

**School Information**

Elementary                      George H. Luck  
Middle                              Riverbend School  
High                                 Strathcona School

**Additional Information**

Date Listed                      October 3rd, 2025  
Days on Market                1  
Zoning                              Zone 56  
HOA Fees Freq.                Annually

DATA IS DEEMED RELIABLE BUT IS NOT GUARANTEED ACCURATE BY THE REALTORS® ASSOCIATION OF EDMONTON. COPYRIGHT 2025 BY THE REALTORS® ASSOCIATION OF EDMONTON. ALL RIGHTS RESERVED.Trademarks are owned or controlled by the Canadian Real Estate Association (CREA) and identify real estate professionals who are members of CREA (REALTOR®, REALTORS®) and/or the quality of services they provide (MLS®, Multiple Listing Service®)  
Listing information last updated on October 4th, 2025 at 3:47am MDT