

\$779,900 - 17867 8 Avenue, Edmonton

MLS® #E4460666

\$779,900

4 Bedroom, 3.50 Bathroom, 2,825 sqft
Single Family on 0.00 Acres

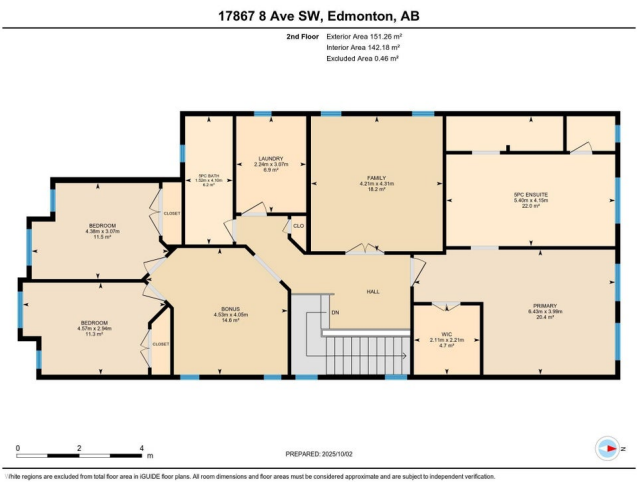
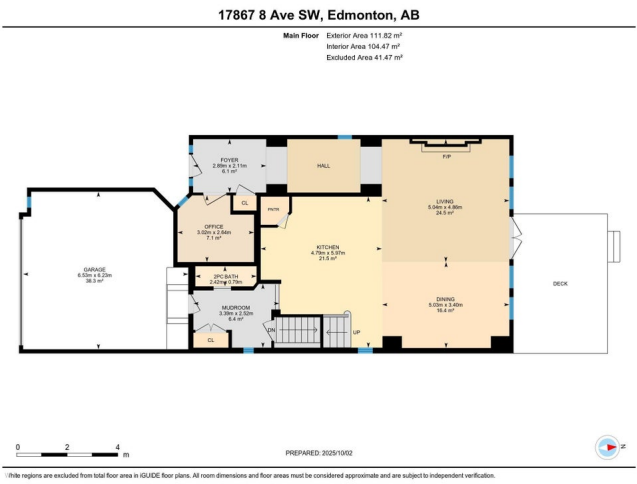
Windermere, Edmonton, AB

This beautifully maintained 2-storey home in Windermere boasts 3920 sq. ft. of total living space, featuring 9' ceilings, prestige hardwood floors, 4 bedrooms, 3.5 baths, and an oversized double attached garage. As you enter, you're greeted by a spacious foyer leading to a bright living room and dining area. The kitchen boasts high-end SS appliances, granite countertops, a large center island, and a pantry. The formal dining room leads to the south-facing backyard and fancy deck. An office and a 2-pc bath complete the main floor. Upstairs, you'll find a bonus room, a family room, 3 spacious bedrooms, and a 5-pc shared bath, with the primary bedroom featuring a walk-in closet and a spa-like 5-pc ensuite. Enjoy the extended living space in the fully finished basement (2022, with permits), complete with a custom bar, private den, inviting rec room, additional bedroom, and a sleek 3-pc bath – all complemented by a new furnace (2022). Close to all amenities, Anthony Henday, and Whitemud Drive.

Built in 2014

Essential Information

MLS® #	E4460666
Price	\$779,900
Bedrooms	4



Bathrooms	3.50
Full Baths	3
Half Baths	1
Square Footage	2,825
Acres	0.00
Year Built	2014
Type	Single Family
Sub-Type	Detached Single Family
Style	2 Storey
Status	Active

Community Information

Address	17867 8 Avenue
Area	Edmonton
Subdivision	Windermere
City	Edmonton
County	ALBERTA
Province	AB
Postal Code	T6W 2S7

Amenities

Amenities	Ceiling 9 ft., Deck, Detectors Smoke, No Animal Home, No Smoking Home, HRV System
Parking	Double Garage Attached

Interior

Interior Features	ensuite bathroom
Appliances	Dishwasher-Built-In, Dryer, Hood Fan, Stove-Gas, Washer, Window Coverings, Wine/Beverage Cooler, Refrigerators-Two
Heating	Forced Air-2, Natural Gas
Stories	3
Has Basement	Yes
Basement	Full, Finished

Exterior

Exterior	Wood, Vinyl
Exterior Features	Airport Nearby, Golf Nearby, Landscaped, Playground Nearby, Public Transportation, Schools, Shopping Nearby, Ski Hill Nearby
Roof	Asphalt Shingles

Construction	Wood, Vinyl
Foundation	Concrete Perimeter

Additional Information

Date Listed	October 2nd, 2025
Days on Market	2
Zoning	Zone 56

DATA IS DEEMED RELIABLE BUT IS NOT GUARANTEED ACCURATE BY THE REALTORS® ASSOCIATION OF EDMONTON. COPYRIGHT 2025 BY THE REALTORS® ASSOCIATION OF EDMONTON. ALL RIGHTS RESERVED.Trademarks are owned or controlled by the Canadian Real Estate Association (CREA) and identify real estate professionals who are members of CREA (REALTOR®, REALTORS®) and/or the quality of services they provide (MLS®, Multiple Listing Service®)

Listing information last updated on October 4th, 2025 at 3:47am MDT