

Courtesy Of Nicole Bosse Of RE/MAX River City

## \$599,950 - 8724 226 Street, Edmonton

MLS® #E4460564

**\$599,950**

3 Bedroom, 2.50 Bathroom, 2,056 sqft  
Single Family on 0.00 Acres

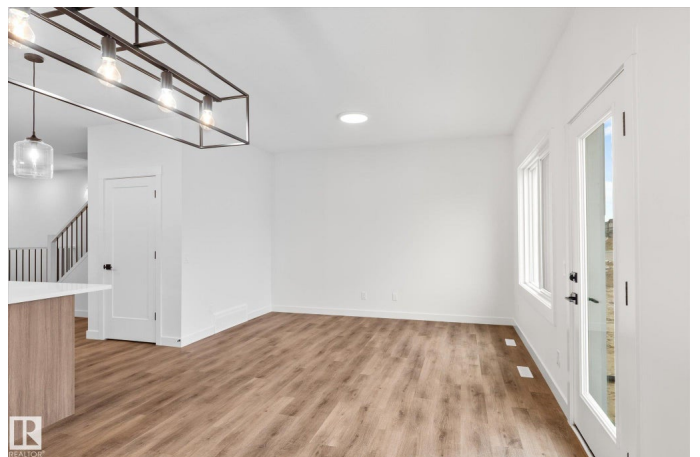
Rosenthal (Edmonton), Edmonton, AB

Say hello to the Sicily by award-winning City Homes, located in the exciting new west Edmonton community of Rosemont. Here youâ€™re walking distance from the upcoming rec centre, schools, and all the everyday amenities that make life convenient. This brand new home offers over 2000 sq ft of stylish living with 3 bedrooms, a bonus room, main floor den, and 2.5 bathrooms. Designed with flexibility in mind, it also features a side entry and 9' foundation for easy future suite potential. The open concept main floor is highlighted by a chef-inspired kitchen with executive-level appliances and plenty of space for entertaining. Upstairs, the show-stopping primary retreat includes vaulted ceilings, a walk-in closet, and a gorgeous 5 pc ensuite. With \$23K in thoughtfully chosen upgrades, quality craftsmanship throughout, and quick possession available, this is the perfect family home in one of Edmontonâ€™s most promising new communities!

Built in 2025

### Essential Information

MLS® #	E4460564
Price	\$599,950
Bedrooms	3
Bathrooms	2.50



Full Baths	2
Half Baths	1
Square Footage	2,056
Acres	0.00
Year Built	2025
Type	Single Family
Sub-Type	Detached Single Family
Style	2 Storey
Status	Active

### Community Information

Address	8724 226 Street
Area	Edmonton
Subdivision	Rosenthal (Edmonton)
City	Edmonton
County	ALBERTA
Province	AB
Postal Code	T5T 7Y6

### Amenities

Amenities	On Street Parking, No Animal Home, No Smoking Home, See Remarks
Parking Spaces	4
Parking	Double Garage Attached

### Interior

Interior Features	ensuite bathroom
Appliances	Dishwasher-Built-In, Microwave Hood Fan, Refrigerator, Stove-Electric
Heating	Forced Air-1, Natural Gas
Stories	2
Has Basement	Yes
Basement	Full, Unfinished

### Exterior

Exterior	Wood, Vinyl
Exterior Features	Flat Site, Golf Nearby, No Back Lane, Not Fenced, Not Landscaped, Playground Nearby, Public Transportation, Schools, Shopping Nearby
Roof	Asphalt Shingles
Construction	Wood, Vinyl
Foundation	Concrete Perimeter

**Additional Information**

Date Listed           October 2nd, 2025  
Days on Market     2  
Zoning                Zone 58

DATA IS DEEMED RELIABLE BUT IS NOT GUARANTEED ACCURATE BY THE REALTORS® ASSOCIATION OF EDMONTON. COPYRIGHT 2025 BY THE REALTORS® ASSOCIATION OF EDMONTON. ALL RIGHTS RESERVED.Trademarks are owned or controlled by the Canadian Real Estate Association (CREA) and identify real estate professionals who are members of CREA (REALTOR®, REALTORS®) and/or the quality of services they provide (MLS®, Multiple Listing Service®)  
Listing information last updated on October 4th, 2025 at 7:02am MDT