

# **\$649,900 - 7618 20a Avenue, Edmonton**

MLS® #E4460394

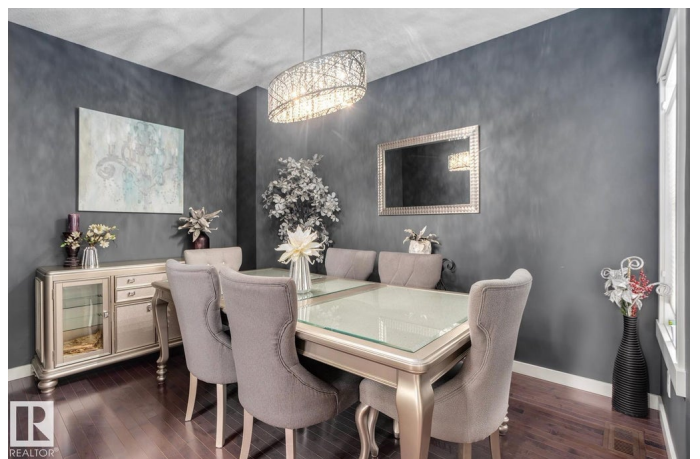
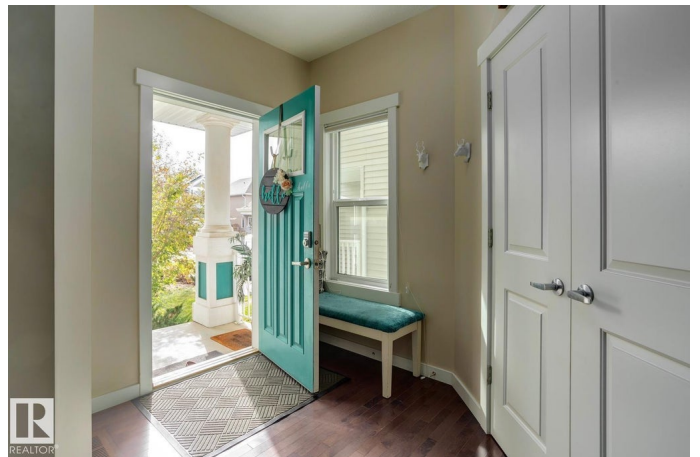
**\$649,900**

3 Bedroom, 2.50 Bathroom, 2,205 sqft

Single Family on 0.00 Acres

Summerside, Edmonton, AB

Do you dream of the kids walking to school? This SUMMERSIDE GEM offers over 2200 sq ft of inviting space with 3 bedrooms and 3 bathrooms. The MODERN OPEN KITCHEN and living room are perfect for family gatherings—just imagine hosting Thanksgiving here! A cozy fireplace adds warmth and charm, while upstairs an impressive bonus room gives space for games, movies, or family fun. The bedrooms are BRIGHT and SPACIOUS. The primary suite offers comfort, privacy, its own 5 piece EN SUITE and an enormous walk-in closet. The basement is a blank slate, ready for your ideas. Step outside to a gorgeous yard with a MASSIVE deck made for summer BBQs, entertaining, and play. An oversized double garage provides room for vehicles, storage, or hobbies. SUMMERSIDE is more than a home—it's a lifestyle, with an exclusive Beach Club where you can swim, kayak, skate, and enjoy year-round fun. Plus, you're minutes from Calgary Trail, the Henday, shopping, dining, and all the conveniences that make life easy.



Built in 2015

## **Essential Information**

MLS® # E4460394

Price \$649,900

Bedrooms	3
Bathrooms	2.50
Full Baths	2
Half Baths	1
Square Footage	2,205
Acres	0.00
Year Built	2015
Type	Single Family
Sub-Type	Detached Single Family
Style	2 Storey
Status	Active

### Community Information

Address	7618 20a Avenue
Area	Edmonton
Subdivision	Summerside
City	Edmonton
County	ALBERTA
Province	AB
Postal Code	T6X 0L6

### Amenities

Amenities	Detectors Smoke, Hot Water Natural Gas
Parking	Double Garage Attached, Over Sized

### Interior

Interior Features	ensuite bathroom
Appliances	Air Conditioning-Central, Dishwasher-Built-In, Dryer, Garage Opener, Oven-Microwave, Refrigerator, Stove-Electric, Washer
Heating	Forced Air-1, Natural Gas
Stories	2
Has Basement	Yes
Basement	Full, Unfinished

### Exterior

Exterior	Wood, Vinyl
Exterior Features	Airport Nearby, Fenced, Flat Site, Golf Nearby, Landscaped, Playground Nearby, Schools
Roof	Asphalt Shingles

Construction	Wood, Vinyl
Foundation	Concrete Perimeter

**School Information**

Elementary	Michael Strembitsky School
Middle	Michael Strembitsky School
High	J. Percy Page

**Additional Information**

Date Listed	October 1st, 2025
Days on Market	3
Zoning	Zone 53
HOA Fees	453.02
HOA Fees Freq.	Annually

DATA IS DEEMED RELIABLE BUT IS NOT GUARANTEED ACCURATE BY THE REALTORS® ASSOCIATION OF EDMONTON. COPYRIGHT 2025 BY THE REALTORS® ASSOCIATION OF EDMONTON. ALL RIGHTS RESERVED.Trademarks are owned or controlled by the Canadian Real Estate Association (CREA) and identify real estate professionals who are members of CREA (REALTOR®, REALTORS®) and/or the quality of services they provide (MLS®, Multiple Listing Service®)

Listing information last updated on October 4th, 2025 at 2:47pm MDT