

Courtesy Of Deidre B Harrison Of Real Broker

\$525,000 - 2432 106 Street, Edmonton

MLS® #E4459438

\$525,000

3 Bedroom, 3.00 Bathroom, 1,289 sqft

Single Family on 0.00 Acres

Ermineskin, Edmonton, AB

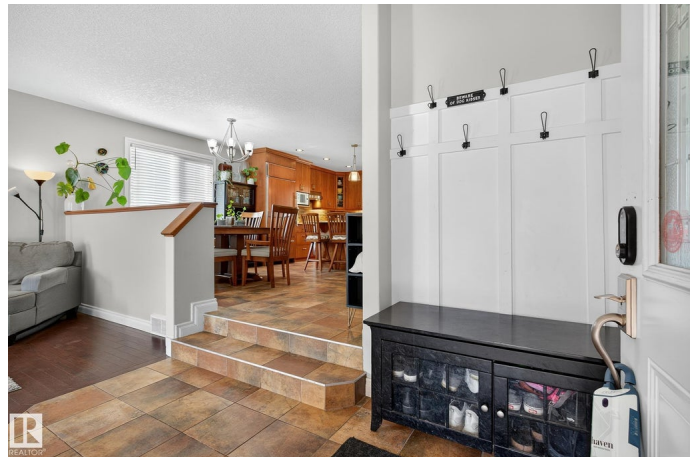
Thoughtfully redesigned, this 1,288 sq. ft. bungalow blends timeless comfort with modern style. The main floor has been substantially renovated, creating an open flow between kitchen, dining, and living spaces. At its heart, a chef's kitchen with panelled Sub-Zero fridge, Wolf cooktop, and Miele wall oven and dishwasher sets the tone for gatherings both big and small. Three bedrooms include a serene primary with ensuite, alongside a refreshed main bath. Light and space extend outdoors, where a large deck overlooks a generous yard ready for summer evenings and play. A partially finished basement adds room to grow, while a double attached garage adds ease. With a new furnace + hot water tank (2025), and central A/C, comfort comes standard. Set in Ermineskin, this home pairs quiet community living with unmatched access: Century Park LRT, Calgary Trail, and the Henday are minutes away, alongside shops, restaurants, and parks. Designed with care and longevity in mind, this home is ready for its next chapter.

Built in 1977

Essential Information

MLS® # E4459438

Price \$525,000



Bedrooms	3
Bathrooms	3.00
Full Baths	3
Square Footage	1,289
Acres	0.00
Year Built	1977
Type	Single Family
Sub-Type	Detached Single Family
Style	Bungalow
Status	Active

Community Information

Address	2432 106 Street
Area	Edmonton
Subdivision	Ermineskin
City	Edmonton
County	ALBERTA
Province	AB
Postal Code	T6J 4K5

Amenities

Amenities	Air Conditioner, Deck, Vinyl Windows
Parking Spaces	4
Parking	Double Garage Attached

Interior

Interior Features	ensuite bathroom
Appliances	Air Conditioning-Central, Dishwasher-Built-In, Dryer, Garage Control, Garage Opener, Hood Fan, Oven-Built-In, Refrigerator, Storage Shed, Stove-Countertop Electric, Washer, Window Coverings, Wine/Beverage Cooler
Heating	Forced Air-1, Natural Gas
Stories	2
Has Basement	Yes
Basement	Full, Partially Finished

Exterior

Exterior	Wood
Exterior Features	Fenced, Public Transportation, Schools, Shopping Nearby

Roof	Asphalt Shingles
Construction	Wood
Foundation	Concrete Perimeter

Additional Information

Date Listed	September 24th, 2025
Days on Market	10
Zoning	Zone 16

DATA IS DEEMED RELIABLE BUT IS NOT GUARANTEED ACCURATE BY THE REALTORS® ASSOCIATION OF EDMONTON. COPYRIGHT 2025 BY THE REALTORS® ASSOCIATION OF EDMONTON. ALL RIGHTS RESERVED.Trademarks are owned or controlled by the Canadian Real Estate Association (CREA) and identify real estate professionals who are members of CREA (REALTOR®, REALTORS®) and/or the quality of services they provide (MLS®, Multiple Listing Service®)

Listing information last updated on October 4th, 2025 at 1:17pm MDT