

\$649,998 - 250 Norwich Bay, Sherwood Park

MLS® #E4458620

\$649,998

5 Bedroom, 2.50 Bathroom, 1,978 sqft

Single Family on 0.00 Acres

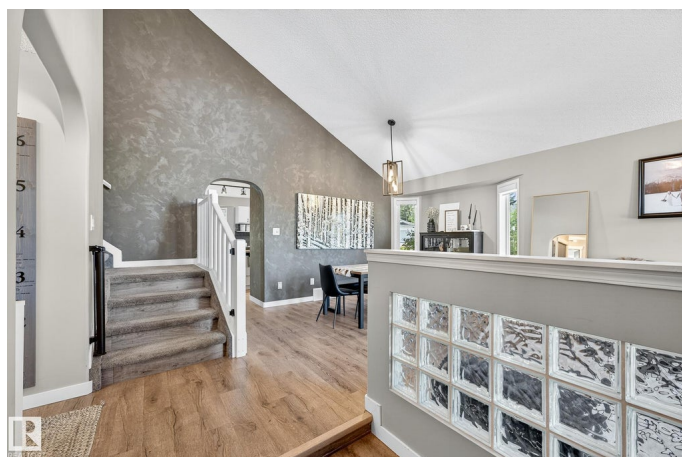
Nottingham, Sherwood Park, AB

Welcome to this beautifully updated home tucked into a quiet cul-de-sac in prestigious Nottingham—one of Sherwood Park’s most sought-after neighbourhoods. The main floor showcases a modern kitchen with granite counters, large island, walk-in pantry & stainless appliances, opening to bright living spaces. Upstairs you’ll find 2 bedrooms plus a generous primary suite featuring a walk-in closet & a fully renovated ensuite designed to impress. The basement offers 2 additional bedrooms, a spacious family room & abundant storage options, along with a bathroom rough-in. Major upgrades include replacement of all poly-B plumbing, new flooring, fresh paint, central A/C, garage heater & a brand-new deck. Outside, the south-facing backyard is private & landscaped for easy enjoyment. A stylish, move-in ready home in an unbeatable location!

Built in 1993

Essential Information

MLS® #	E4458620
Price	\$649,998
Bedrooms	5
Bathrooms	2.50
Full Baths	2
Half Baths	1



Square Footage	1,978
Acres	0.00
Year Built	1993
Type	Single Family
Sub-Type	Detached Single Family
Style	2 Storey
Status	Active

Community Information

Address	250 Norwich Bay
Area	Sherwood Park
Subdivision	Nottingham
City	Sherwood Park
County	ALBERTA
Province	AB
Postal Code	T8A 5S2

Amenities

Amenities	See Remarks
Parking	Double Garage Attached

Interior

Interior Features	ensuite bathroom
Appliances	Air Conditioning-Central, Dishwasher-Built-In, Dryer, Garage Control, Garage Opener, Hood Fan, Refrigerator, Storage Shed, Stove-Electric, Washer, Window Coverings, Garage Heater
Heating	Forced Air-1, Natural Gas
Stories	3
Has Basement	Yes
Basement	Full, Finished

Exterior

Exterior	Wood, Vinyl
Exterior Features	Cul-De-Sac, Fenced, Landscaped, Public Transportation, Schools, Shopping Nearby
Roof	Cedar Shakes
Construction	Wood, Vinyl
Foundation	Concrete Perimeter

Additional Information

Date Listed September 19th, 2025

Days on Market 2

Zoning Zone 25

DATA IS DEEMED RELIABLE BUT IS NOT GUARANTEED ACCURATE BY THE REALTORS® ASSOCIATION OF EDMONTON. COPYRIGHT 2025 BY THE REALTORS® ASSOCIATION OF EDMONTON. ALL RIGHTS RESERVED. Trademarks are owned or controlled by the Canadian Real Estate Association (CREA) and identify real estate professionals who are members of CREA (REALTOR®, REALTORS®) and/or the quality of services they provide (MLS®, Multiple Listing Service®)

Listing information last updated on September 21st, 2025 at 4:33pm MDT