

## \$484,900 - 447 Davenport Place, Sherwood Park

MLS® #E4458554

**\$484,900**

3 Bedroom, 3.00 Bathroom, 1,168 sqft

Single Family on 0.00 Acres

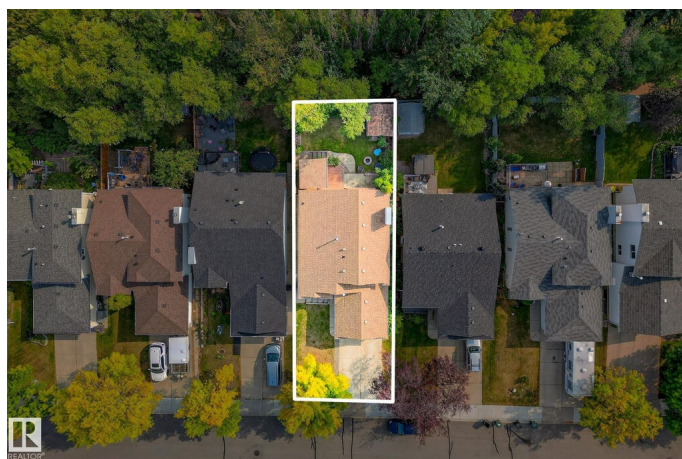
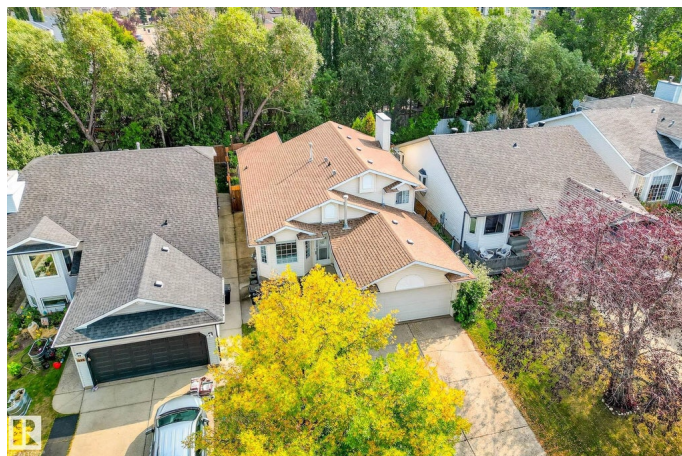
Davidson Creek, Sherwood Park, AB

This charming 4-level split in Davidson Creek offers a beautiful private backyard with access to the path leading to McGhan Park and Clarkdale Lake. Inside, you'll find vaulted ceilings that enhance the bright, airy feel, granite countertops, and engineered vinyl flooring throughout much of the home. The composite deck is perfect for relaxing or entertaining, and the heated attached double garage adds comfort and convenience. With a finished basement, 3 full bathrooms and 3 bedrooms - including the option to easily convert the second upstairs bedroom back into two separate rooms - this well-appointed home provides flexible living space to suit your needs. Even better, it's just a short walk to the new Davidson Creek Elementary School, making daily drop-offs and pick-ups a breeze. This convenient location blends lifestyle and practicality with trails, parks, and community amenities right at your doorstep.

Built in 1992

### Essential Information

MLS® #	E4458554
Price	\$484,900
Bedrooms	3
Bathrooms	3.00
Full Baths	3



Square Footage	1,168
Acres	0.00
Year Built	1992
Type	Single Family
Sub-Type	Detached Single Family
Style	4 Level Split
Status	Active

### **Community Information**

Address	447 Davenport Place
Area	Sherwood Park
Subdivision	Davidson Creek
City	Sherwood Park
County	ALBERTA
Province	AB
Postal Code	T8H 1R9

### **Amenities**

Amenities	Deck, Vaulted Ceiling, See Remarks
Parking	Double Garage Attached

### **Interior**

Interior Features	ensuite bathroom
Appliances	Dishwasher-Built-In, Dryer, Garage Control, Microwave Hood Fan, Refrigerator, Storage Shed, Stove-Electric, Vacuum Systems, Washer, Window Coverings, TV Wall Mount, Garage Heater
Heating	Forced Air-1, Natural Gas
Fireplace	Yes
Fireplaces	Stone Facing
Stories	4
Has Basement	Yes
Basement	Full, Finished

### **Exterior**

Exterior	Wood, Vinyl
Exterior Features	Backs Onto Park/Trees, Low Maintenance Landscape, Playground Nearby
Roof	Asphalt Shingles
Construction	Wood, Vinyl

Foundation                      Concrete Perimeter

**Additional Information**

Date Listed                      September 19th, 2025

Days on Market                2

Zoning                            Zone 25

DATA IS DEEMED RELIABLE BUT IS NOT GUARANTEED ACCURATE BY THE REALTORS® ASSOCIATION OF EDMONTON. COPYRIGHT 2025 BY THE REALTORS® ASSOCIATION OF EDMONTON. ALL RIGHTS RESERVED.Trademarks are owned or controlled by the Canadian Real Estate Association (CREA) and identify real estate professionals who are members of CREA (REALTOR®, REALTORS®) and/or the quality of services they provide (MLS®, Multiple Listing Service®)

Listing information last updated on September 21st, 2025 at 2:47pm MDT