

## \$434,900 - 106 South Creek Wynd, Stony Plain

MLS® #E4455525

**\$434,900**

4 Bedroom, 2.50 Bathroom, 1,585 sqft  
Single Family on 0.00 Acres

South Creek, Stony Plain, AB

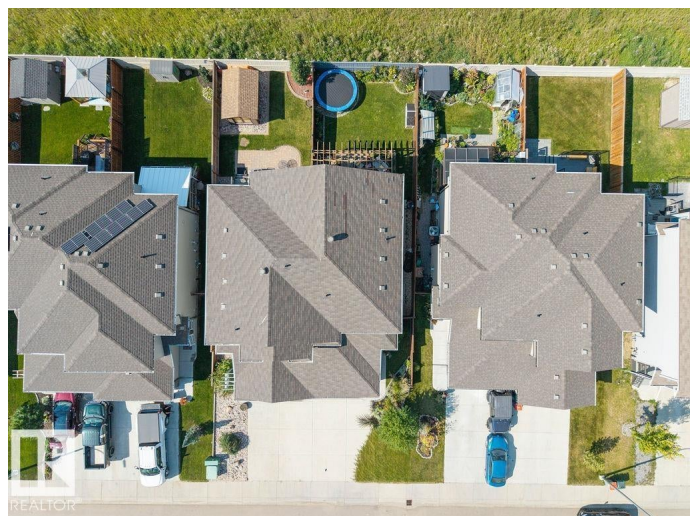
This modern duplex offers impressive design and a functional open floor plan. The kitchen features rich maple cabinets, exotic granite countertops, and a raised eating bar island, opening to a bright great room with a 36" gas fireplace and custom tiled mantel. The main level is enhanced with stylish shiplap accents, adding warmth and character. Upstairs, you'll find 3 spacious bedrooms, including a primary suite with a walk-in closet and 4-pc bath, along with the convenience of an upper-level laundry room. The partially finished basement adds even more living space with a bedroom, den, living room, and roughed-in bathroom. Outside, enjoy beautifully landscaped grounds with a solid wood pergola and stunning views of the surrounding farmers' fields. Additional highlights include central air conditioning, a double attached garage, and a striking stone exterior. Perfectly located near the Stony Plain Golf Course and close to schools, shopping, and amenities—this gorgeous home is a must-see!

Built in 2017

### Essential Information

MLS® # E4455525

Price \$434,900



Bedrooms	4
Bathrooms	2.50
Full Baths	2
Half Baths	1
Square Footage	1,585
Acres	0.00
Year Built	2017
Type	Single Family
Sub-Type	Half Duplex
Style	2 Storey
Status	Active

### **Community Information**

Address	106 South Creek Wynd
Area	Stony Plain
Subdivision	South Creek
City	Stony Plain
County	ALBERTA
Province	AB
Postal Code	T7X 2X2

### **Amenities**

Amenities	Off Street Parking, On Street Parking, Deck, No Smoking Home
Parking	Double Garage Attached

### **Interior**

Interior Features	ensuite bathroom
Appliances	Air Conditioning-Central, Dishwasher-Built-In, Dryer, Refrigerator, Stove-Electric, Washer
Heating	Forced Air-1, Natural Gas
Fireplaces	Tile Surround
Stories	3
Has Basement	Yes
Basement	Full, Partially Finished

### **Exterior**

Exterior	Wood, Vinyl
Exterior Features	Fenced, Flat Site, Landscaped, Schools, Shopping Nearby
Roof	Asphalt Shingles

Construction	Wood, Vinyl
Foundation	Concrete Perimeter

### **School Information**

Elementary	Forest Green School
Middle	Westview School
High	Memorial Composite High

### **Additional Information**

Date Listed	August 31st, 2025
Days on Market	35
Zoning	Zone 91

DATA IS DEEMED RELIABLE BUT IS NOT GUARANTEED ACCURATE BY THE REALTORS® ASSOCIATION OF EDMONTON. COPYRIGHT 2025 BY THE REALTORS® ASSOCIATION OF EDMONTON. ALL RIGHTS RESERVED. Trademarks are owned or controlled by the Canadian Real Estate Association (CREA) and identify real estate professionals who are members of CREA (REALTOR®, REALTORS®) and/or the quality of services they provide (MLS®, Multiple Listing Service®)

Listing information last updated on October 5th, 2025 at 4:17pm MDT