

## **\$88,000 - 308 12831 66 Street, Edmonton**

---

MLS® #E4453527

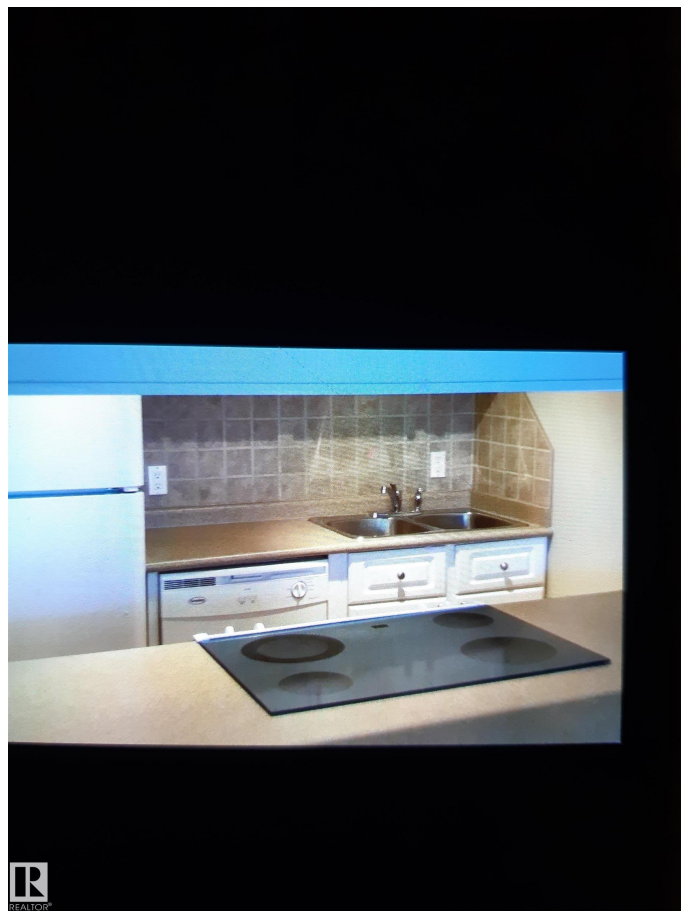
**\$88,000**

1 Bedroom, 1.00 Bathroom, 538 sqft

Condo / Townhouse on 0.00 Acres

Belvedere, Edmonton, AB

Investor Alert! Concrete building with balcony storage, as well as storage inside the complex. Hollyburn Towers condo is a well-maintained unit. The building is in very good condition. Roof and parking exterior sealed. Each floor has new ceramic tiles and painted baseboards. There are 2 elevators with security cameras everywhere. Access only to the floor you live on. Balconies are painted and reinforced. This can also be ideal for a first-time buyer. The east-facing balcony, the spacious living room, the galley kitchen, and the spacious bedroom. Parking is available for rent, underground and outside. There is plenty of public transit, a school, and a playground across the street, and within walking distance of the Belvedere transit center. Shopping and recreation facilities are nearby.



Built in 1983

### **Essential Information**

MLS® #	E4453527
Price	\$88,000
Bedrooms	1
Bathrooms	1.00
Full Baths	1
Square Footage	538
Acres	0.00
Year Built	1983

Type	Condo / Townhouse
Sub-Type	Apartment High Rise
Style	Single Level Apartment
Status	Active

### Community Information

Address	308 12831 66 Street
Area	Edmonton
Subdivision	Belvedere
City	Edmonton
County	ALBERTA
Province	AB
Postal Code	T5C 0A4

### Amenities

Amenities	Car Wash, Security Door, St
Parking	See Remarks

### Interior

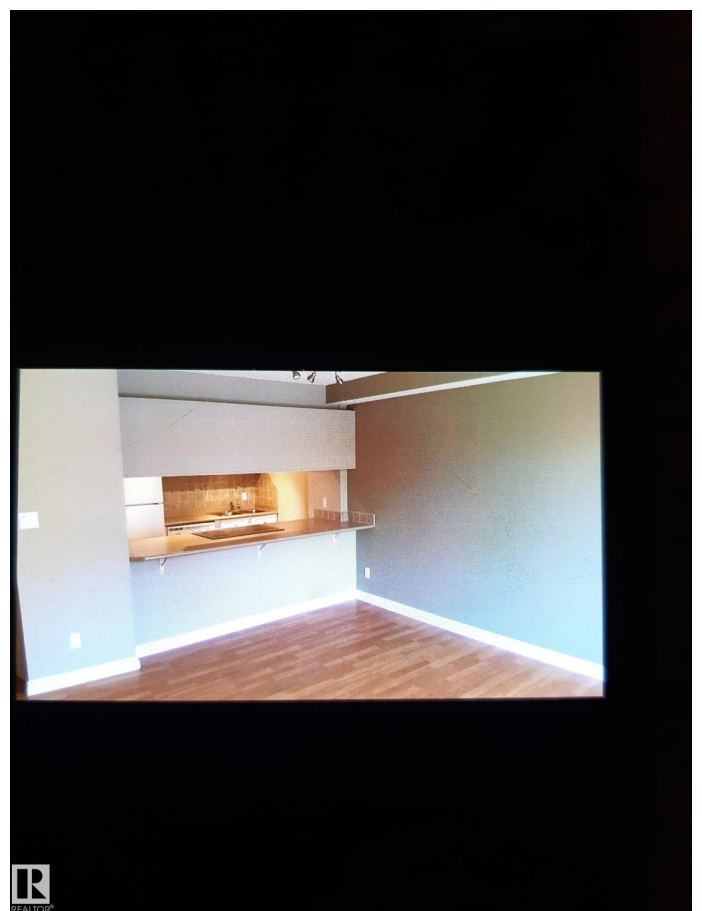
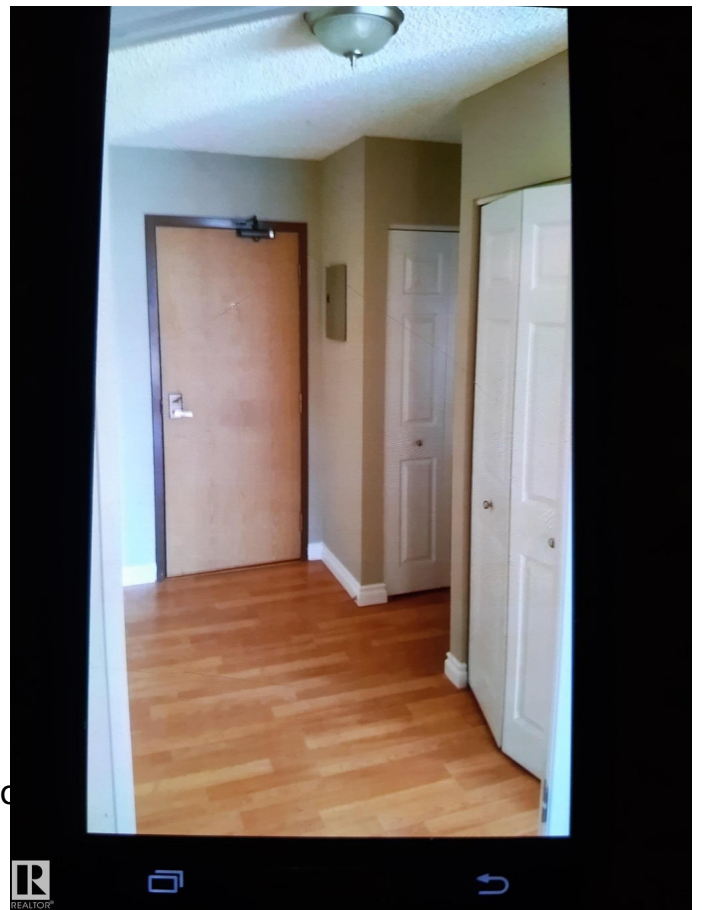
Appliances	Refrigerator, Stove-Electric
Heating	Baseboard, Natural Gas
# of Stories	8
Stories	8
Has Basement	Yes
Basement	None, No Basement

### Exterior

Exterior	Concrete, Brick, Stucco
Exterior Features	Paved Lane, Playground Shopping Nearby
Roof	Asphalt Shingles
Construction	Concrete, Brick, Stucco
Foundation	Concrete Perimeter

### Additional Information

Date Listed	August 18th, 2025
Days on Market	1
Zoning	Zone 02
Condo Fee	\$395



DATA IS DEEMED RELIABLE BUT IS NOT GUARANTEED ACCURATE BY THE REALTORS® ASSOCIATION OF EDMONTON. COPYRIGHT 2025 BY THE REALTORS® ASSOCIATION OF EDMONTON. ALL RIGHTS RESERVED.Trademarks are owned or controlled by the Canadian Real Estate Association (CREA) and identify real estate professionals who are members of CREA (REALTOR®, REALTORS®) and/or the quality of services they provide (MLS®, Multiple Listing Service®)

Listing information last updated on August 19th, 2025 at 8:17am MDT