

\$515,000 - 67 Avonlea Way, Spruce Grove

MLS® #E4450326

\$515,000

3 Bedroom, 2.50 Bathroom, 1,981 sqft
Single Family on 0.00 Acres

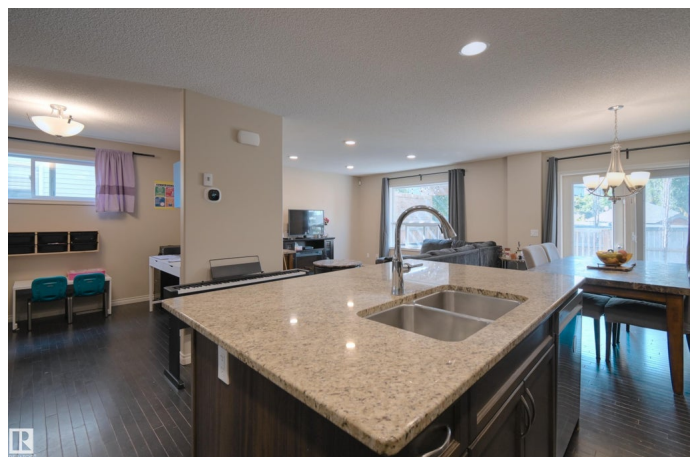
Aspen Glen, Spruce Grove, AB

You will LOVE this 2-storey in the lovely family subdivision of Jesperdale! This beautiful 3-Bed, 3-Bath home boasts a spacious, open kitchen with corner pantry, large island with breakfast seating, an ample dining room with easy access to the deck and back yard, a large living room, main floor den/flex room and 2-pc bath. Central air provides a cool environment on our hot, summer days. The roomy primary suite offers a walk-in closet and a 4-pc ensuite with a corner soaker tub. The 2nd and 3rd bedrooms are ample in size. A 4-pc bath, a convenient laundry room, and a large bonus room complete the upper floor. A mud room with 2-pc bath accesses the double attached garage. Enjoy lazy summer days on the large deck with a gas BBQ hookup, gazebo, and privacy screen. The front curb appeal with flowering bushes is just lovely! This property is situated in Jesperdale, close to schools, parks and walking trails, public transportation and commuters enjoy easy access to the Yellowhead.

Built in 2012

Essential Information

MLS® #	E4450326
Price	\$515,000
Bedrooms	3



Bathrooms	2.50
Full Baths	2
Half Baths	1
Square Footage	1,981
Acres	0.00
Year Built	2012
Type	Single Family
Sub-Type	Detached Single Family
Style	2 Storey
Status	Active

Community Information

Address	67 Avonlea Way
Area	Spruce Grove
Subdivision	Aspen Glen
City	Spruce Grove
County	ALBERTA
Province	AB
Postal Code	T7X 0H8

Amenities

Amenities	Air Conditioner, Deck
Parking	Double Garage Attached, Over Sized

Interior

Interior Features	ensuite bathroom
Appliances	Air Conditioning-Central, Dishwasher-Built-In, Dryer, Garage Control, Garage Opener, Microwave Hood Fan, Refrigerator, Stove-Electric, Washer
Heating	Forced Air-1, Natural Gas
Stories	2
Has Basement	Yes
Basement	Full, Unfinished

Exterior

Exterior	Wood, Stone, Vinyl
Exterior Features	Fenced, Fruit Trees/Shrubs, Golf Nearby, Landscaped, Playground Nearby, Public Swimming Pool, Public Transportation, Schools, Shopping Nearby

Roof	Asphalt Shingles
Construction	Wood, Stone, Vinyl
Foundation	Concrete Perimeter

Additional Information

Date Listed	July 30th, 2025
Days on Market	20
Zoning	Zone 91

DATA IS DEEMED RELIABLE BUT IS NOT GUARANTEED ACCURATE BY THE REALTORS® ASSOCIATION OF EDMONTON. COPYRIGHT 2025 BY THE REALTORS® ASSOCIATION OF EDMONTON. ALL RIGHTS RESERVED.Trademarks are owned or controlled by the Canadian Real Estate Association (CREA) and identify real estate professionals who are members of CREA (REALTOR®, REALTORS®) and/or the quality of services they provide (MLS®, Multiple Listing Service®)

Listing information last updated on August 19th, 2025 at 5:17pm MDT