

\$205,000 - 211 11441 Ellerslie Road, Edmonton

MLS® #E4449946

\$205,000

2 Bedroom, 2.00 Bathroom, 784 sqft
Condo / Townhouse on 0.00 Acres

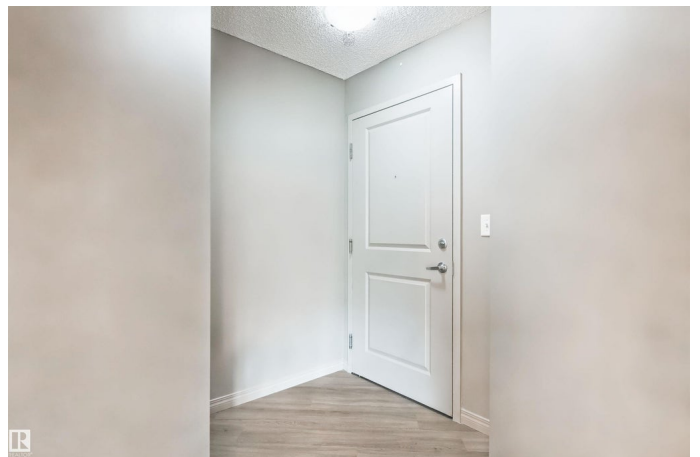
Rutherford (Edmonton), Edmonton, AB

Renovations complete. Immediate Possession Available. Buyer friendly pricing. New flooring, updated walls, new paint. Lovely spacious 2 bedroom, 2 bathroom suite facing west & north. The covered balcony with natural gas line is a convenient and useful outdoors space protected from the rain. Park in the warmth of the underground parkade where the stall is two spots from elevators. There is also a separate storage cage in room AA6 on parkade level. Rutherford Village puts you an easy walk to many retail & service offices and rapid transportation locations. Move in during the warm summer months. This home is clean, neat & ready. No age restriction and pets are allowed with board approval

Built in 2005

Essential Information

MLS® #	E4449946
Price	\$205,000
Bedrooms	2
Bathrooms	2.00
Full Baths	2
Square Footage	784
Acres	0.00
Year Built	2005
Type	Condo / Townhouse



Sub-Type	Lowrise Apartment
Style	Single Level Apartment
Status	Active

Community Information

Address	211 11441 Ellerslie Road
Area	Edmonton
Subdivision	Rutherford (Edmonton)
City	Edmonton
County	ALBERTA
Province	AB
Postal Code	T6W 1S9

Amenities

Amenities	Off Street Parking, Detectors Smoke, Intercom, Low Flow Faucets/Shower, Low Flw/Dual Flush Toilet, No Animal Home, Parking-Visitor, Vinyl Windows, Storage Cage, Natural Gas BBQ Hookup
Parking Spaces	1
Parking	Parkade

Interior

Interior Features	ensuite bathroom
Appliances	Dishwasher-Built-In, Garage Opener, Hood Fan, Refrigerator, Stacked Washer/Dryer, Stove-Electric
Heating	Baseboard, Hot Water, Natural Gas
# of Stories	4
Stories	1
Has Basement	Yes
Basement	None, No Basement

Exterior

Exterior	Wood, Brick, Stucco
Exterior Features	Flat Site, Golf Nearby, Landscaped, Playground Nearby, Public Transportation, Schools, Shopping Nearby
Roof	Asphalt Shingles
Construction	Wood, Brick, Stucco
Foundation	Concrete Perimeter

School Information

Elementary	Johnny Bright/LeeOtterson
Middle	Johnny Bright/LeeOtterson
High	Anne Anderson/McCaffery

Additional Information

Date Listed July 26th, 2025

Days on Market 71

Zoning Zone 55

Condo Fee \$540

DATA IS DEEMED RELIABLE BUT IS NOT GUARANTEED ACCURATE BY THE REALTORS® ASSOCIATION OF EDMONTON. COPYRIGHT 2025 BY THE REALTORS® ASSOCIATION OF EDMONTON. ALL RIGHTS RESERVED. Trademarks are owned or controlled by the Canadian Real Estate Association (CREA) and identify real estate professionals who are members of CREA (REALTOR®, REALTORS®) and/or the quality of services they provide (MLS®, Multiple Listing Service®)

Listing information last updated on October 5th, 2025 at 2:32pm MDT